

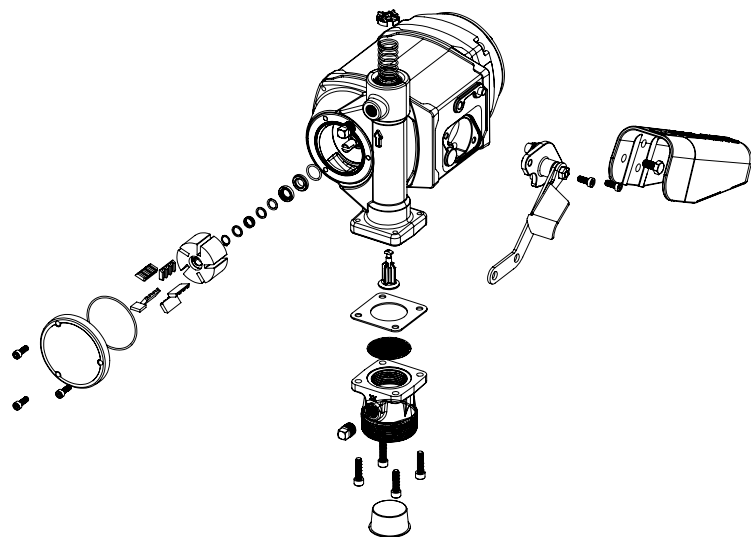


# FILL-RITE®

The Most Trusted Name in Pumps and Meters

## NX25-120 & NX25-240\* SERIES TECHNICAL SPECIFICATIONS

Motor	NX25-120	NX25-240*
Power	120VAC	240VAC (50/60 Hz)
HP (Horsepower) Rating	1/3 HP	
Amps (FLA)	3.5	1.8
RPM	Variable 400 - 3500	
Duty Cycle	Continuous for fuel transfer	
Thermal Protection	Electronically protected	
Certifications	UL/cUL Motor, ATEX, IECEx, CE	



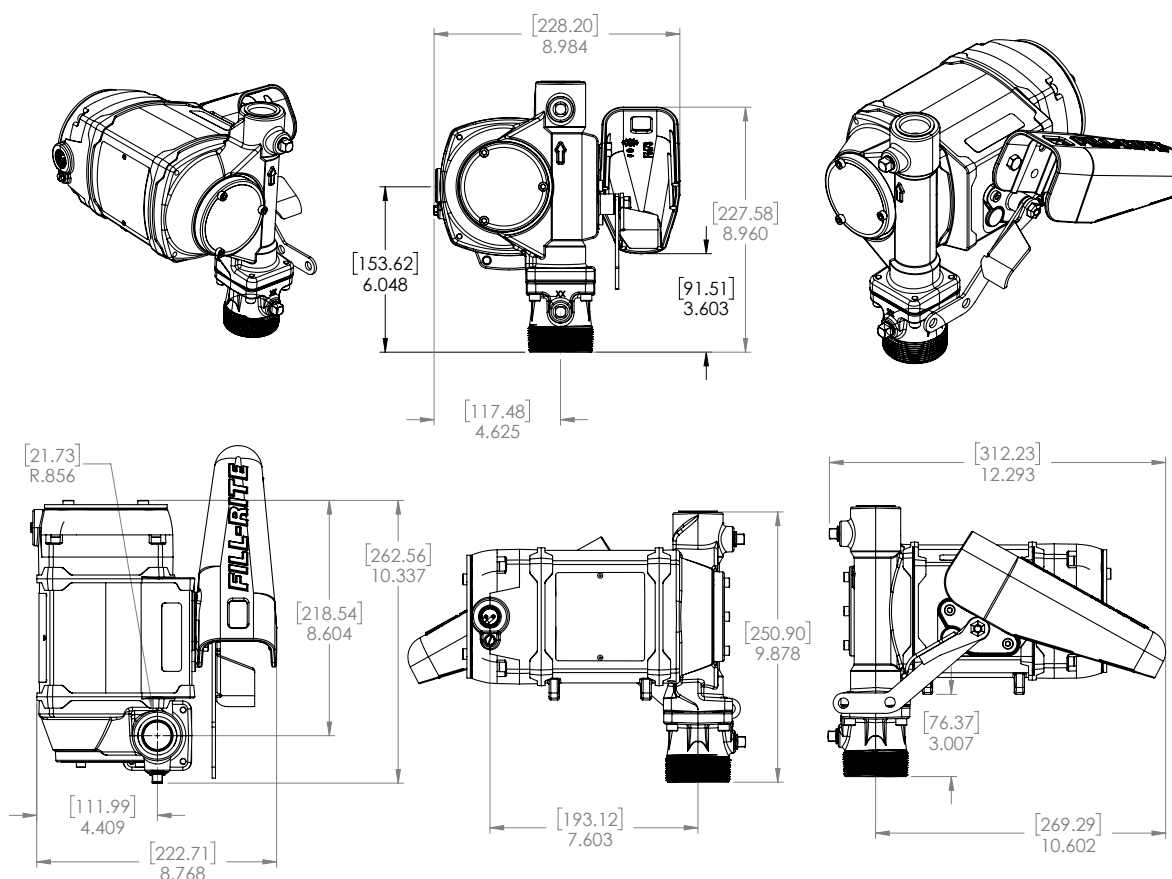
Pump	
Type / Design	Rotary Vane
GPM in Supplied Configuration	25 GPM / 95 LPM**
Bypass Pressure Rating (PSI) - Max	25 PSI
Dry Vac (in Hg)	11
Head - Max	48.5'
Inlet - Size / Thread	1 - 1/4" NPT (BSP available)
Outlet - Size / Thread	1" NPT (BSP available)
Mount	2" NPT Bung/2" BSP Bung
Material - Pump Housing	Cast Iron
Material - Wetted Material	Phenolic, Stainless Steel, Steel, Acetal, Thermoset, Buna-N, Fluorocarbon
Rotor Material	Powdered Iron
Rotor Vane Material	Acetal
Compatible Fluids	Diesel, Gasoline, Bio-Diesel up to B20, E15, Kerosene, Mineral Spirits, Methanol (up to 15%)
Strainer Mesh Size	20 x 20
Warranty	2 Years

### SERVICE KIT INFORMATION

Kit	Description	Parts
KIT321RK	Overhaul Kit	Rotor, rotor cover, vanes, o-ring seal, shaft seal kit, bypass valve, inlet seal & screen, rotor key, attaching hardware
KIT321RG	Rotary Group	Rotor, vanes, rotor key, gasket, rotor cover, screws
KIT320SL	Shaft Seal	8 piece assembly
KIT321BV	Bypass Kit	Poppet, spring, o-ring, cap
KIT321NB	Boot Kit	Nozzle boot, attaching hardware
KIT321SK	External Seal Kit	Rotor cover o-ring seal, inlet gasket, screen
KIT321BG	Inlet Kit	Inlet bung adapter, attaching hardware, inlet screen, seal
KIT321SW	Switch	Switch Assembly
KIT321ASN	Anti-Siphon Kit	Anti-Siphon hose, connectors

\*NX25-240 model available in 2020  
\*\*Adding accessories will affect flow rate

## DIMENSIONAL INFORMATION



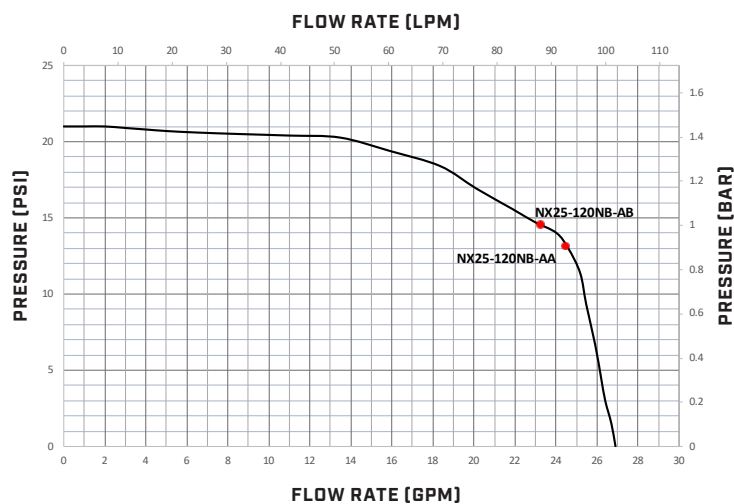
### Measurements

Overall Height	9.878"
Overall Width	8.984"
Overall Depth	12.293"
Intake Center Line to Back of Nozzle Boot	10.602"
Product Weight	22.1 lbs / 10.0 kg
Qty per Pallet	16
Box Dimensions (LxWxH) - Pump Only	18" x 15½" x 10"
Box Dimensions (LxWxH) - Full Kit	21½" x 19½" x 9¾"

### Optional Accessories

Nozzle - Size	1" NPT-F inlet, 1 1/8" OD spout
Nozzle	Ultra Hi-Flow Automatic
Hose Diameter	1"
Hose Length	18'
Hose Material of Construction	Neoprene exterior
Hose Static Wire (Yes/No)	Yes
Certifications	UL/cUL Listed, ATEX, IECEx, CE

### PERFORMANCE CURVE: NX25-120/240\* SERIES



NX25-120 & NX25-240\* Pump Models

\*NX25-240 model available in 2020